

No traffic is permitted within Painted Left-Turn Islands, which are commonly used in rural areas to channel traffic into turning lanes.



## Reserved Lanes

To improve the safety and flow of designated vehicles, certain traffic lanes have been reserved for their use only. Traffic signs identify the vehicles that the lanes are reserved for. The reserved lanes are marked by double broken lines and white diamond patterns.

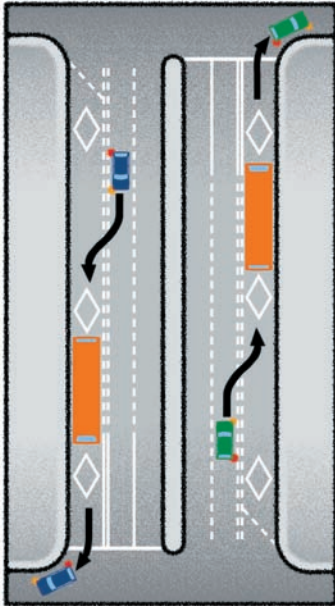
The following are some examples of how reserved lanes are used:

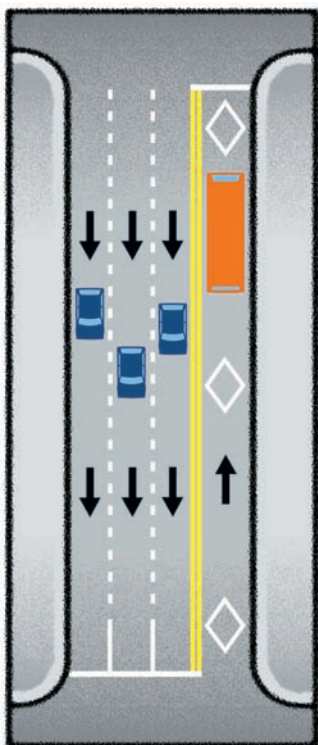
### 1. With-Flow Reserved Lane

A curb lane is reserved for use by designated vehicles only. Motorists making right turns are permitted to enter the reserved lane at any point in the block preceding their turn.

#### Pavement Markings

Double broken white lane lines and diamond symbols designate the reserved lane.



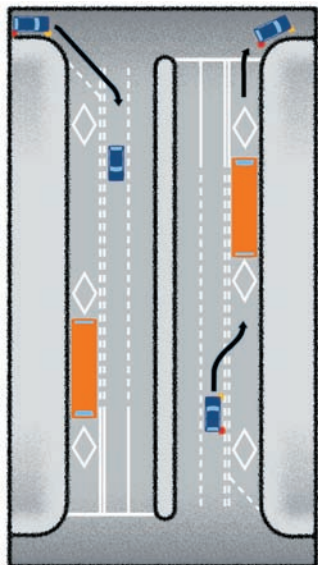


## 2. Contra-Flow Reserved Lane

A curb lane on a one-way street is reserved for use by designated vehicles only. Designated vehicles travel in the opposite direction of traffic.

### Pavement Markings

Double solid yellow lane lines and white diamond symbols designate the contra-flow lane.



### Making Right Turns with Reserved Lanes

Drivers may enter the reserved lane at any location in the block just before the intersection at which they want to turn right.

When turning right onto a street with a reserved lane as the curb lane, enter the second lane from the curb.